

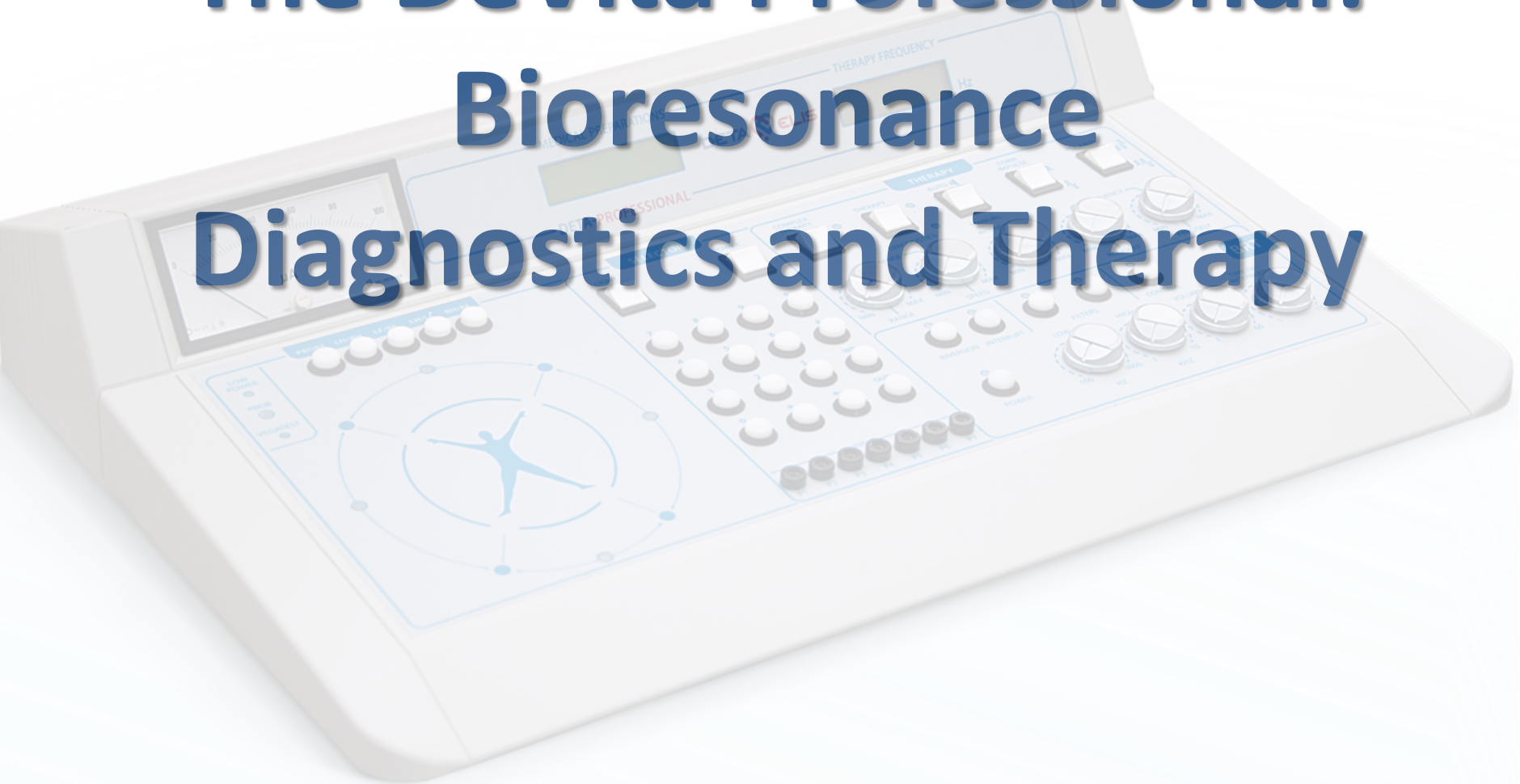


Deta
Elis
Holding

Υγεία
Επιχειρηματικότητα
Καινοτομία

WWW.DEHOLDING.INFO

The DeVita Professional: Bioresonance Diagnostics and Therapy



DEVITA PROFESSIONAL



NEW GENERATION MODEL:
coming soon -
releasing Autumn 2024!



Original model



DEVITA PROFESSIONAL NEW GENERATION



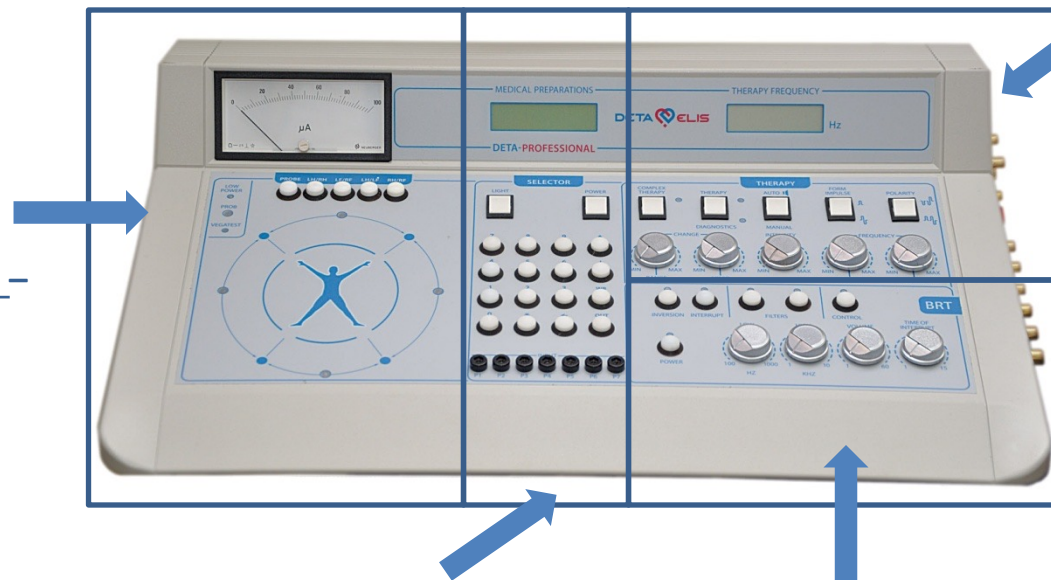
OLD DEVITA PROFESSIONAL



THERAPY MODULE:

1. ELECTROACUPUNCTURE
2. ELECTROMAGNETIC
3. QUANTUM LIGHT

DIAGNOSTIC MODULE – VOLL & VRT



PHARMACOLOGICAL SELECTOR

BIORESONANCE THERAPY (BRT) MODULE

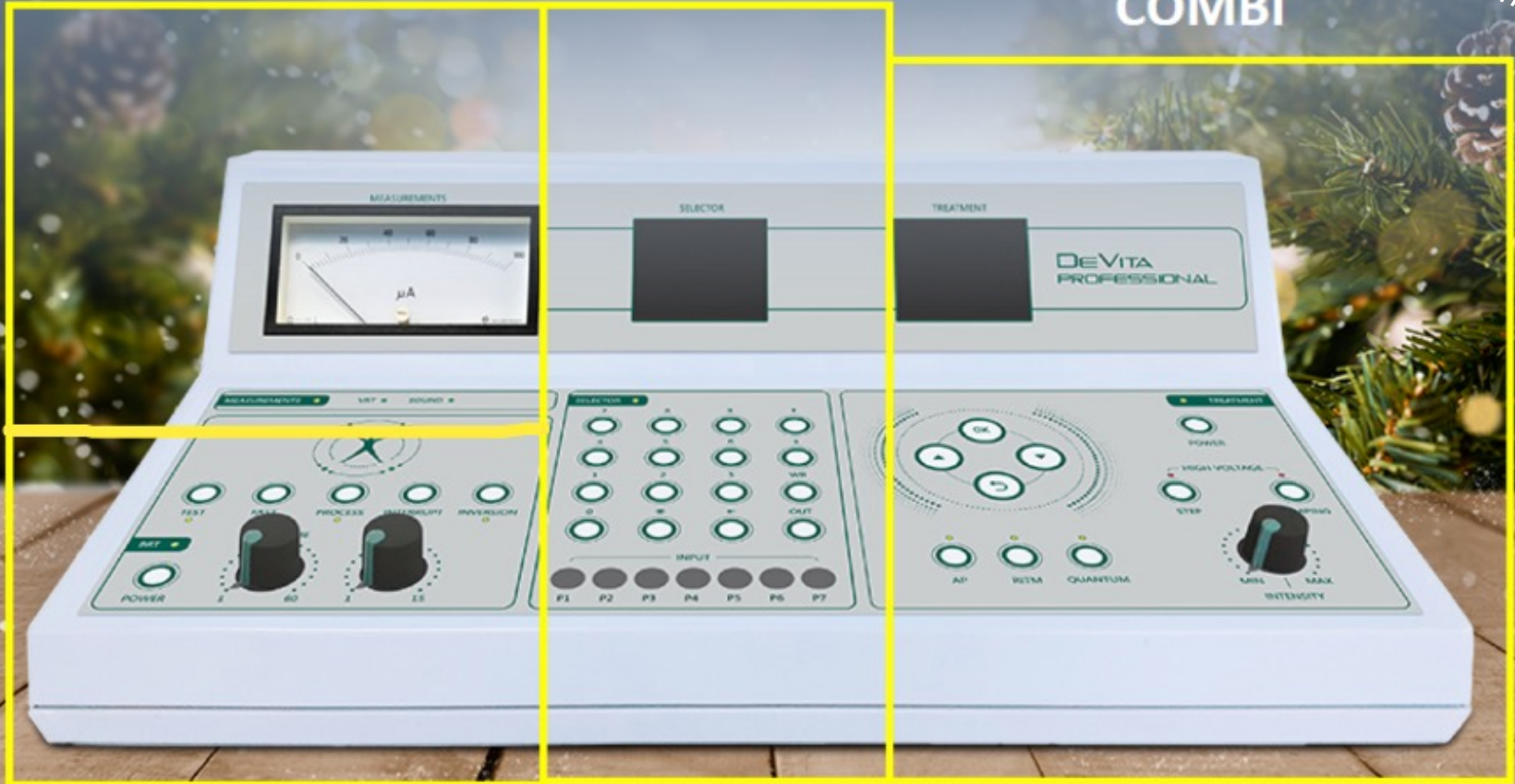


DEVITA PROFESSIONAL NEW

DIAGNOSTIC & PHARMA SELECTOR

COMBI

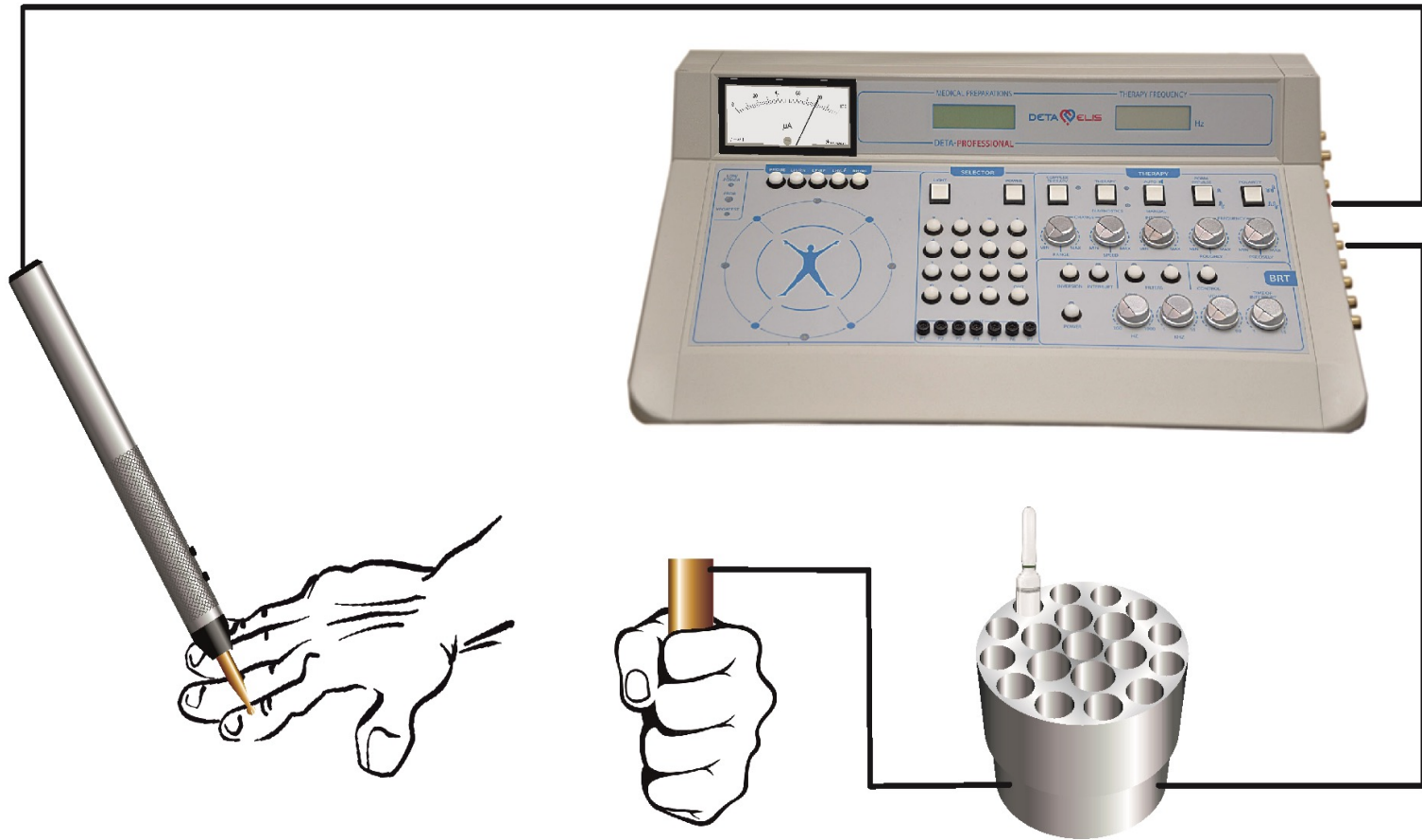
Over 3000
additional
frequencies!



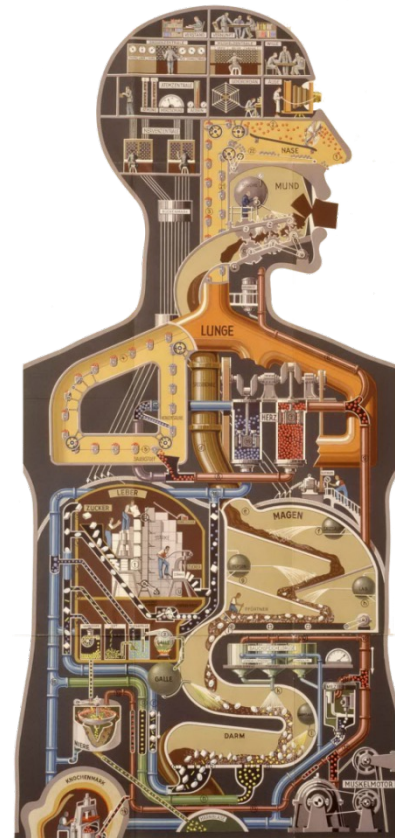
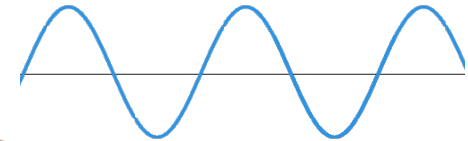
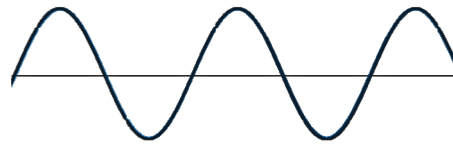
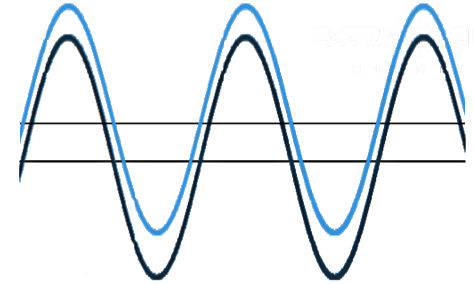
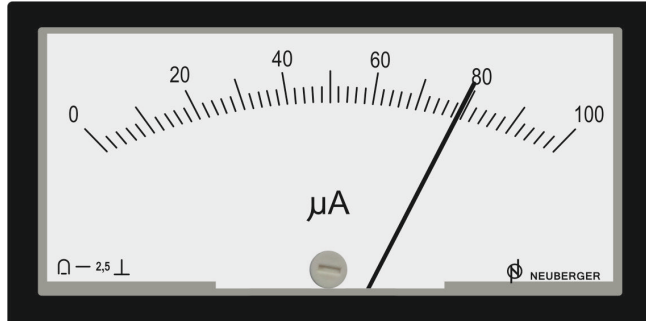


DIAGNOSTICS MODE

DEVITA PROFESSIONAL

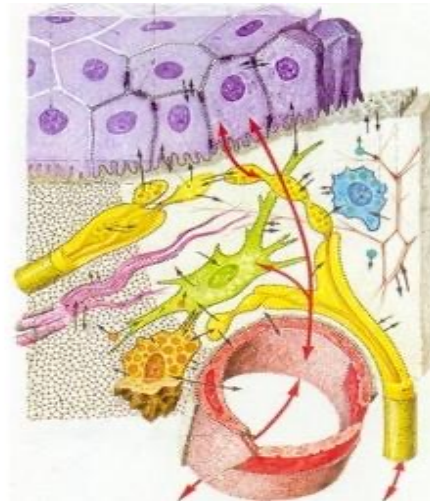


DEVITA PROFESSIONAL



- ENERGY LEVELS OF ORGANISM
- PSYCHO–EMOTIONAL STATUS
- STRESS IN THE ORGANISM
- CONDITION OF IMMUNE SYSTEM
- CONDITION OF ENDOCRINE SYSTEM
- CONDITION OF AUTONOMIC NERVOUS SYSTEM

DETERMINATION OF THE AMOUNT OF TOXINS IN THE ORGANISM



- HEAVY METALS
- GEOPATHIC LOAD
- RADIOACTIVE LOAD
- ELECTROMAGNETIC LOAD
- HOUSEHOLD TOXINS
- CHEMICAL TOXINS

•AUTOIMMUNE PROCESSES

•ALLERGIES

•CHRONIC INFLAMMATORY PROCESSES

•ACUTE INFLAMMATORY PROCESSES

•GEOPATHETIC LOAD

•RADIOACTIVE LOAD

•ELECTROMAGNETIC LOAD

- MINERALS and TRACE ELEMENTS DEFFICIENCY
- ENZYMES DEFFICIENCY
- VITAMINS DEFFICIENCY
- HORMONES DEFFICIENCY

•FUNGAL BURDEN

•VIRUS BURDEN

•BACTERIAL BURDEN

•HELMINTHS BURDEN

•PROTOZOA BURDEN

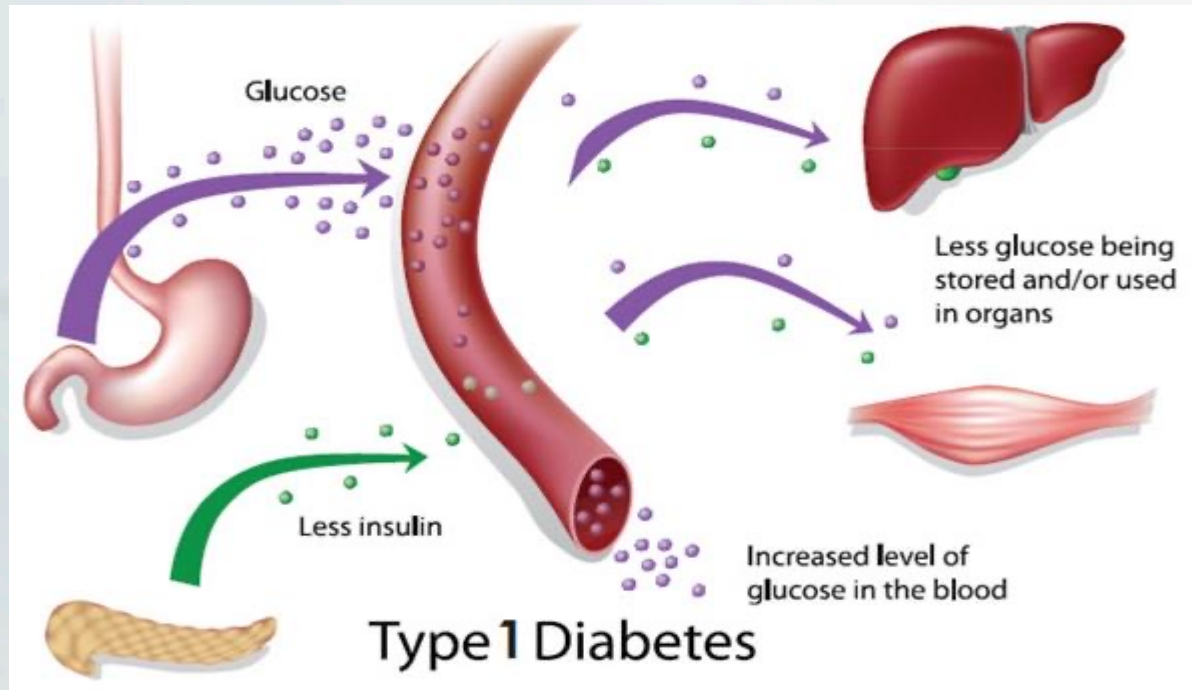
MULTIPLE SCLEROSIS



PMID: 24141514

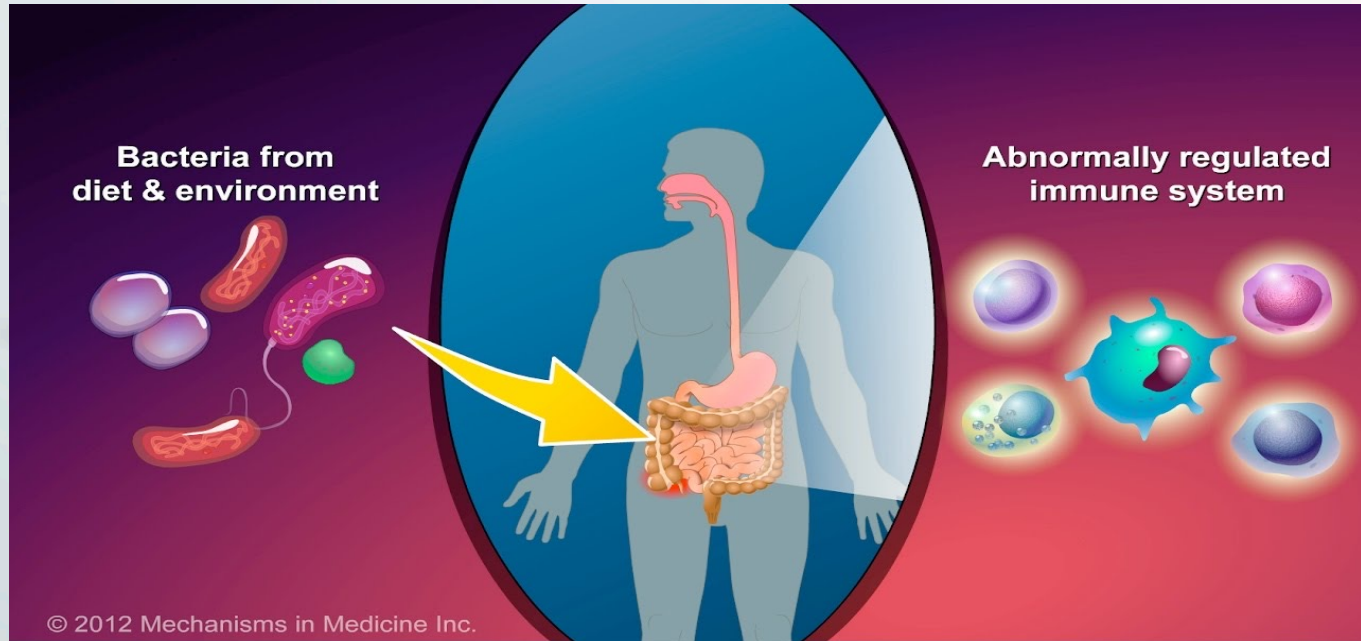
The Epstein-Barr, cytomegalovirus, human herpesvirus 6 and human herpesvirus 7 viruses are the members that are most studied as being possible triggers of multiple sclerosis. According to evidence in the literature, the herpesvirus family is strongly involved in the pathogenesis of this disease, but it is unlikely that they are the only component responsible for its development. There are probably multiple triggers and more studies are necessary to investigate and define these interactions.

DIABETES TYPE 1



- Eurytrema pancreaticum
- Opisthorchis
- Fasciola hepatica
- Coxsackie for the diabetes that develop in young age

CROHN'S DISEASE

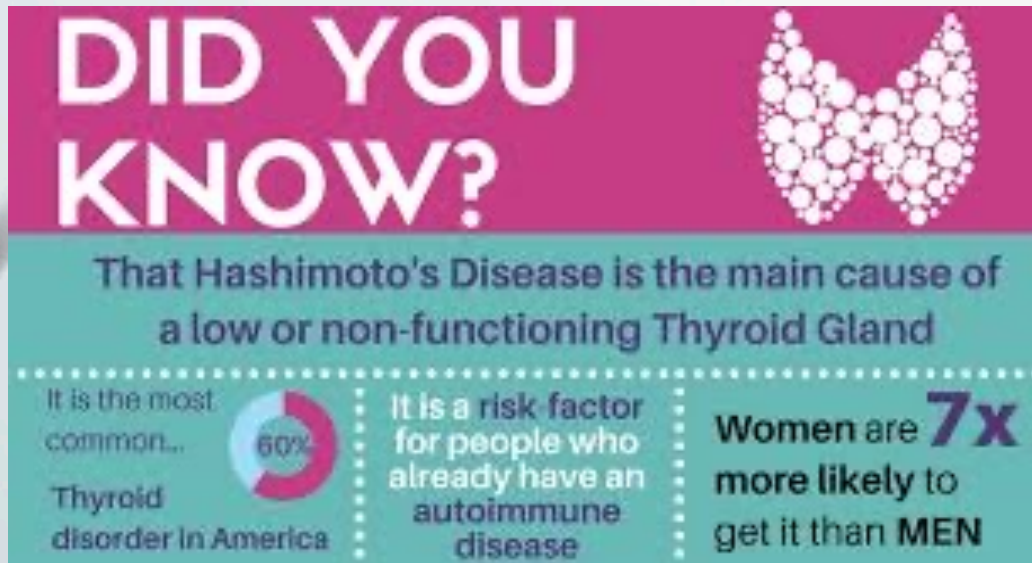


PMCID: PMC4161797

PMID: 25232246

Since the first description of CD in 1932, numerous research groups worldwide have attempted to unravel the complex and multifactorial etiology of the disease to develop a curative therapy. In addition to the identification of genetic and environmental risk factors in CD, increasing lines of evidence have supported a role for infectious agents in CD etiopathogenesis. Those include *Candida Albicans*, *E coli*, *Listeria*, *Yersinia*, *Helicobacter*

HASHIMOTO DISEASE



PMCID: PMC2654877

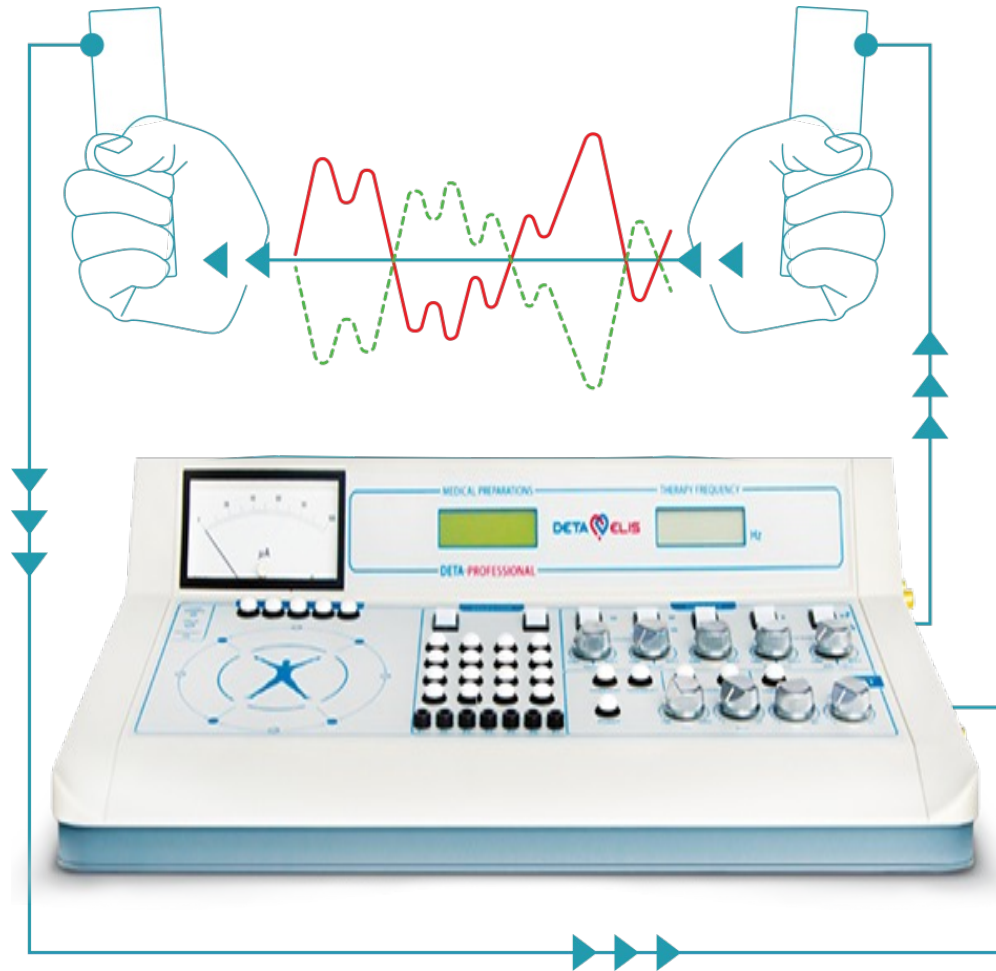
PMID: [19138419](#)

Direct evidence of the presence of viruses or their components in the organ are available for retroviruses (HFV) and mumps in subacute thyroiditis, for retroviruses (HTLV-1, HFV, HIV and SV40) in Graves's disease and for HTLV-1, enterovirus, rubella, mumps virus, HSV, EBV and parvovirus in Hashimoto's thyroiditis.

THERAPY MODE

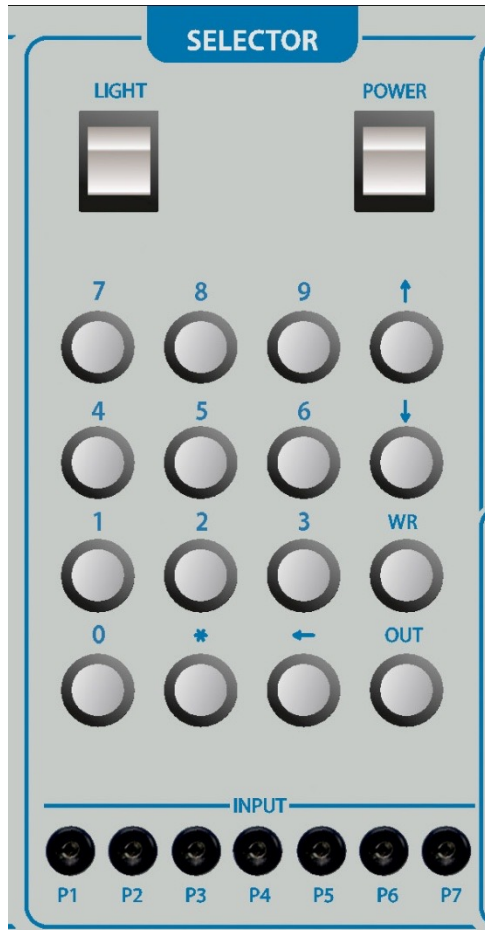
DEVITA PROFESSIONAL

BASIC BIORESONANCE THERAPY - INVERSION

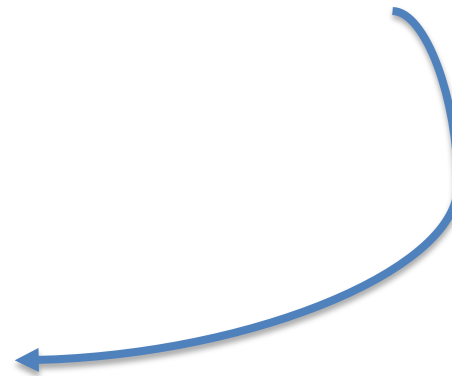
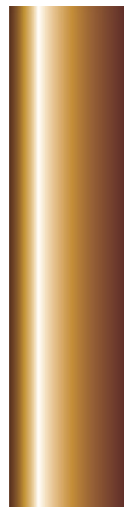


DEVITA PROFESSIONAL

PHARMA THERAPY



AUTONOSODE THERAPY



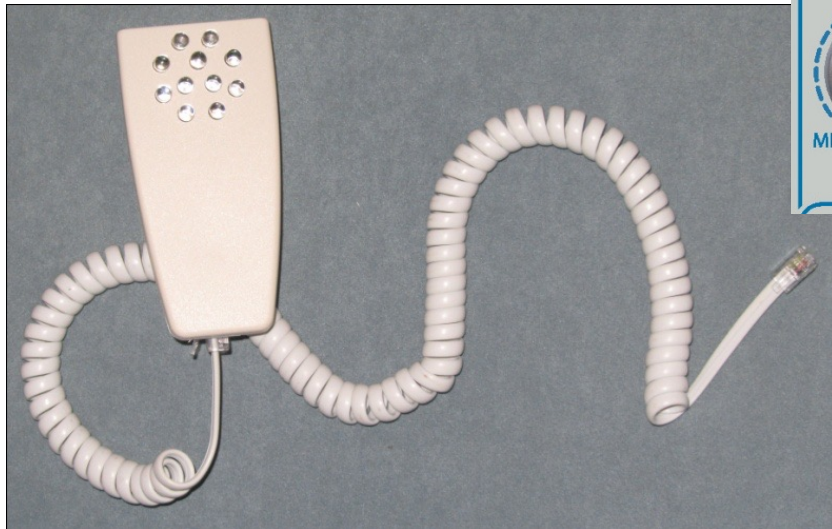
DEVITA PROFESSIONAL

EXOGENOUS THERAPY



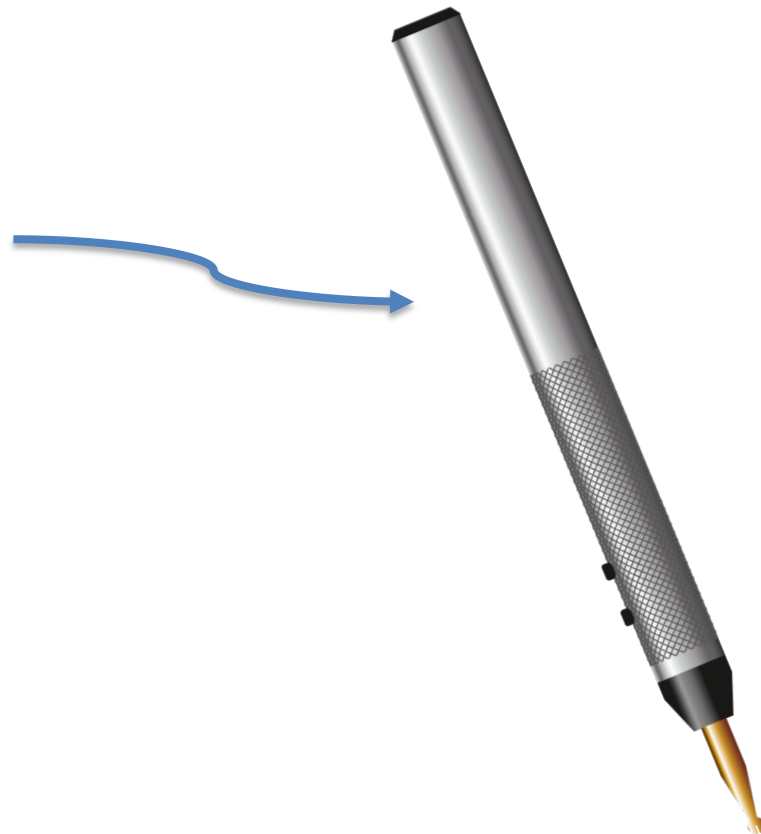
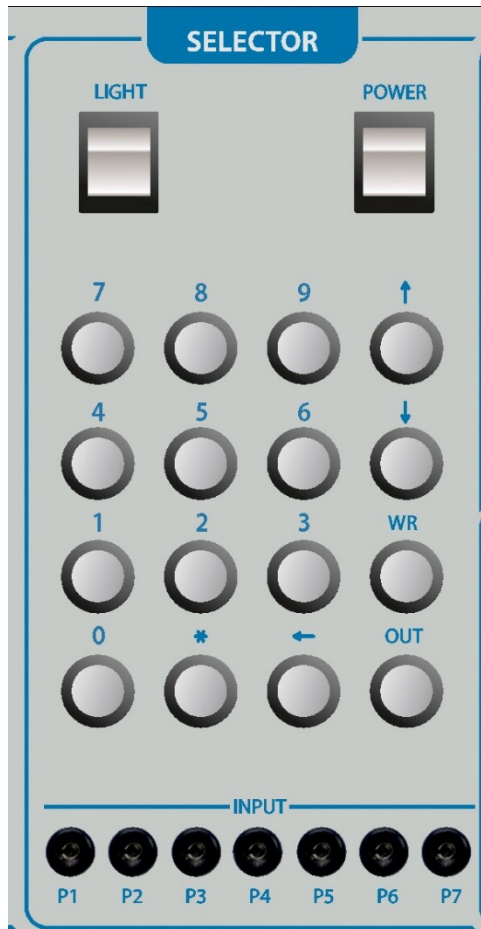
DEVITA PROFESSIONAL

QUANTUM THERAPY



DEVITA PROFESSIONAL

ELECTROACUPUNCTURE THERAPY



PREPARATION OF HOMEOPATHIC MEDICINES



WHY DEVITA PROFESSIONAL ?

> 95 % DIAGNOSTIC RELIABILITY



ACCURATE DIAGNOSIS

ORGAN



PATHOLOGY



CAUSATIVE FACTOR

OVER 15000 DIFFERENT
FREQUENCIES FOR DIAGNOSIS
AND THERAPY

5 METHODS OF THERAPY

1. Electromagnetic Therapy
2. Bioresonance Therapy
3. Electroacupuncture Therapy
4. Quantum Light Therapy
5. Complex Therapy (1, 2 and 4)

NEW DEVITA PROFESSIONAL: 2 VERSIONS

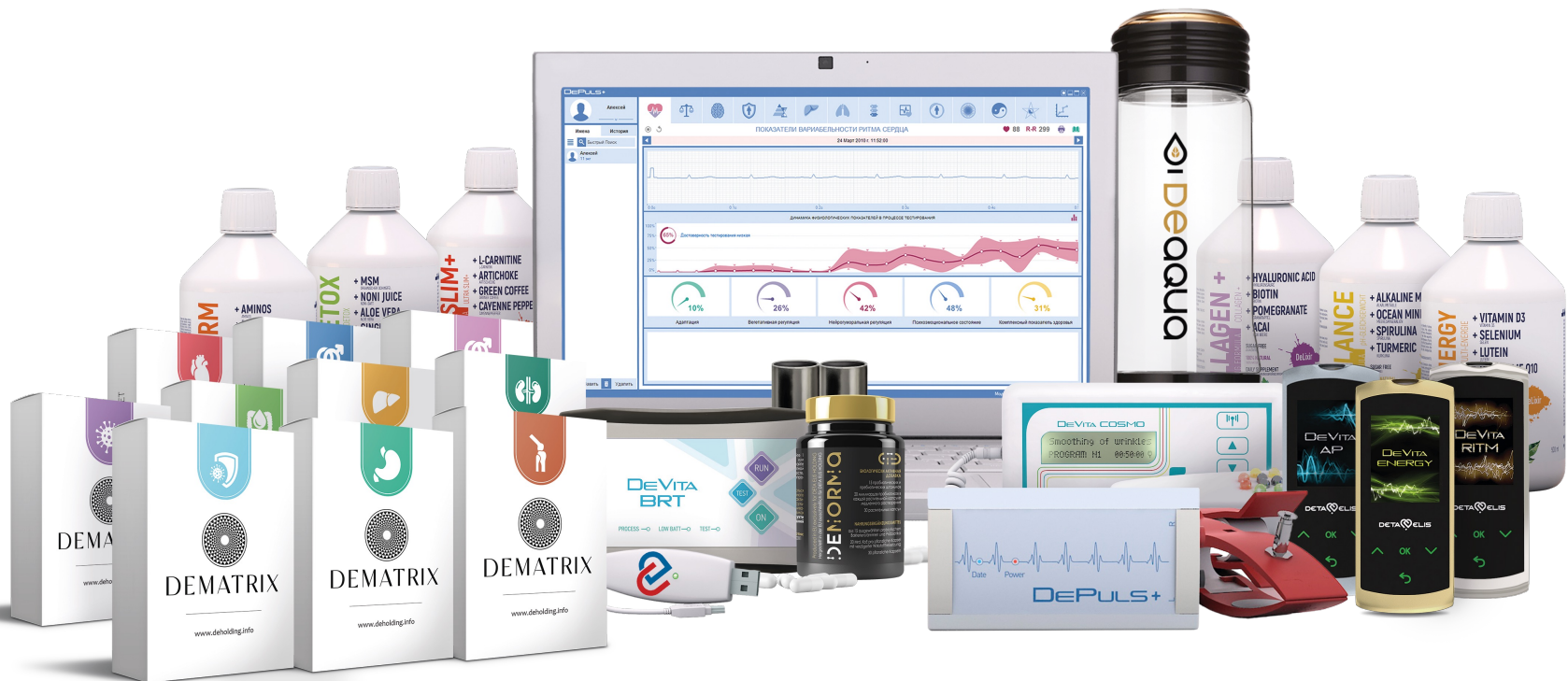
TWO NEW VERSIONS AVAILABLE AUTUMN 2024:
‘Devita D’ - Diagnostics only
‘Devita Professional’- Diagnostics and Treatment



DETA ELIS PRODUCT RANGE FOR HEALTH IMPROVEMENT

State-of-the-art, mini portable bioresonance devices:
programable with client's tailor-made programs following
diagnostic scan.

Supportive bioresonance products for inflammation reduction,
detoxification, restoration and energising at cellular levels.



* DEVITA BRT:

<https://www.youtube.com/watch?v=TYj60p9Qt50> (3 MINUTES)

<https://www.youtube.com/watch?v=kkFMBNXZKQk> (40 MINUTES)



* DEVITA RITM:

<https://youtu.be/NVou3IK2bYM> (3 MINUTES)

* DEVITA MINI AP

<https://youtu.be/uC9eKQsc1Jw> (3 MINUTES)

<https://youtu.be/JLTg0P7Q1dw> (35 MINUTES)





Deta
Elis
Holding

Υγεία
Επιχειρηματικότητα
Καινοτομία

WWW.DEHOLDING.INFO