



Deta
Elis
Holding

Health
Business
Innovations

WWW.DEHOLDING.INFO



DeVITA COSMO

The first cosmetic device of DETA series
combining cosmetic and curative action

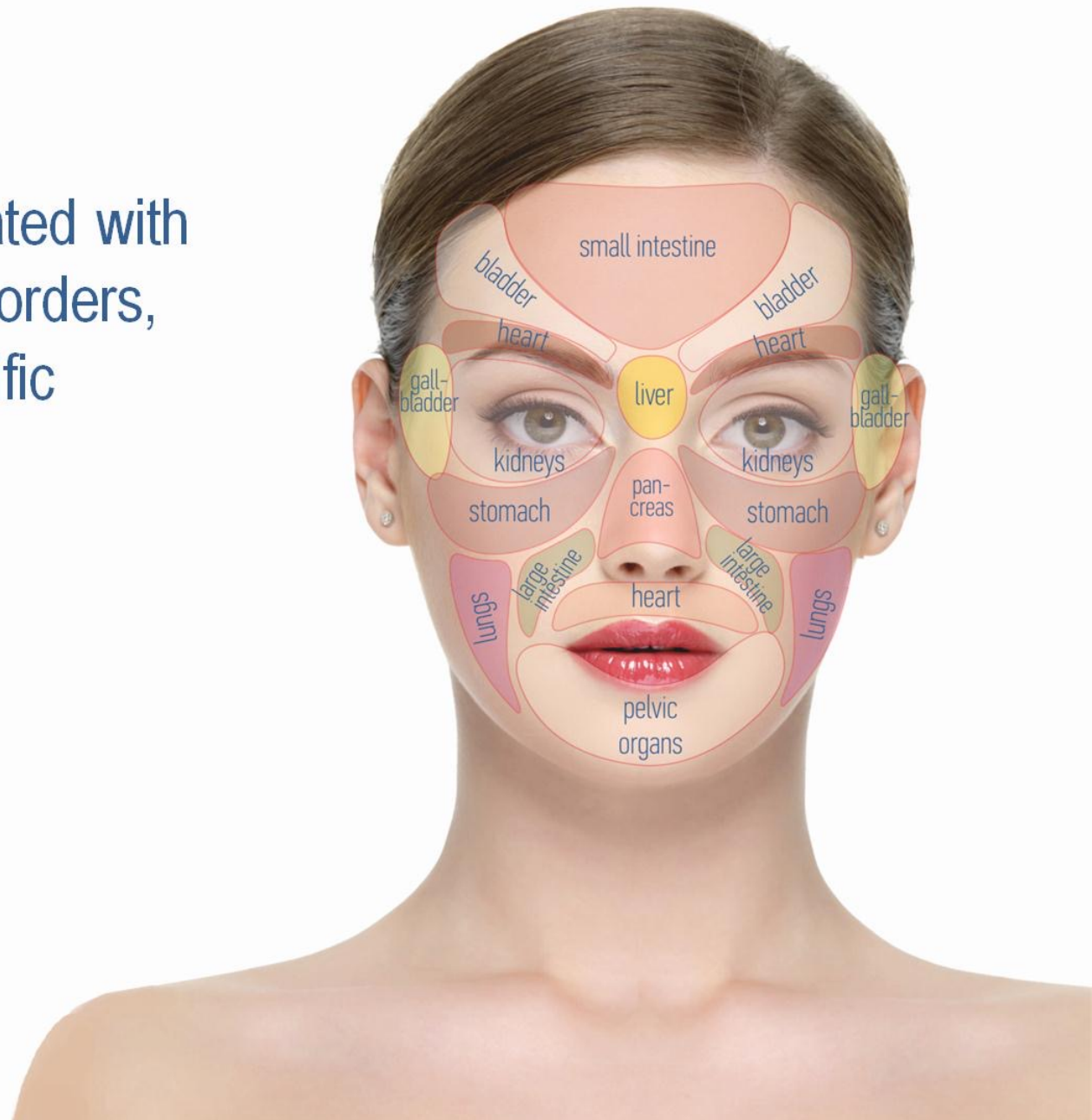


THERAPEUTIC

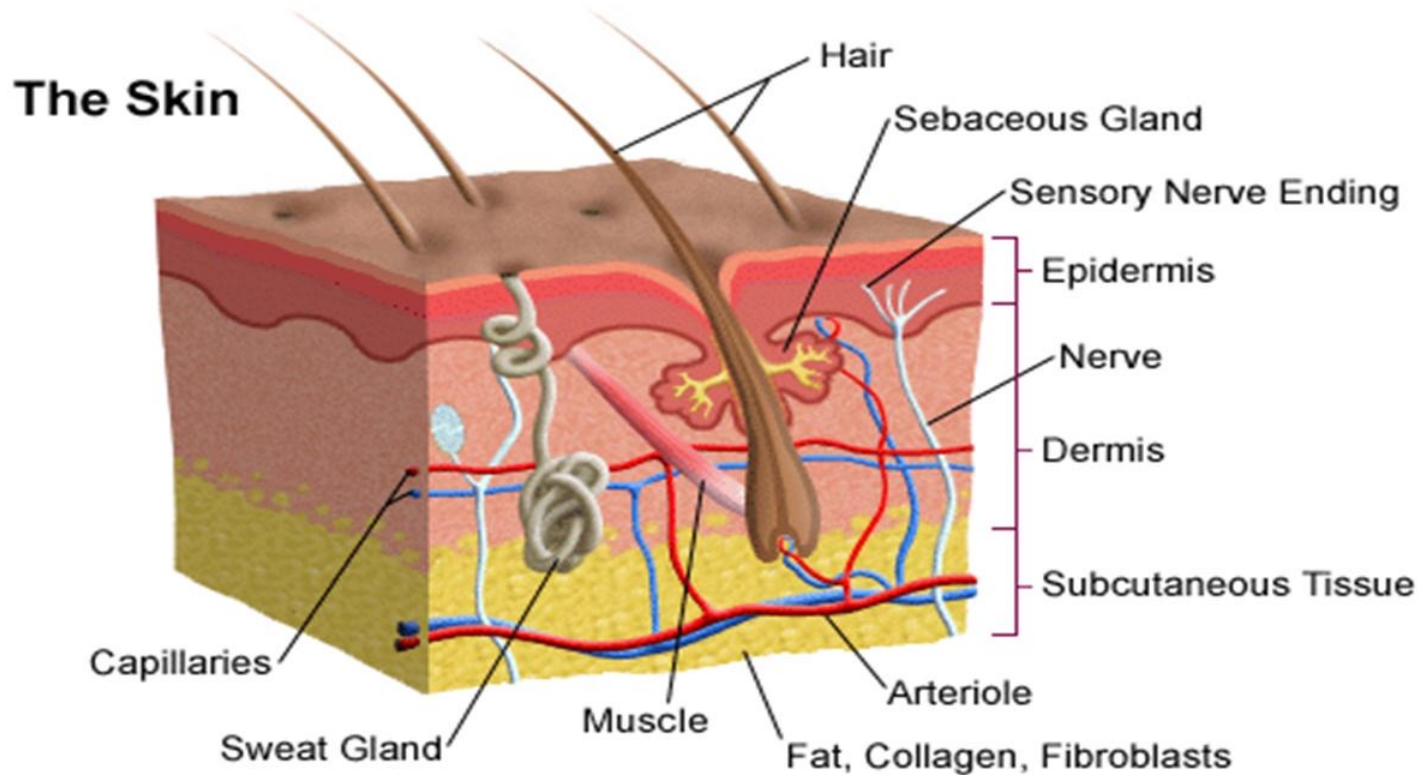
EFFECTIVE

HARMLESS

Problems associated with internal organ disorders, reflected on specific areas of the face.



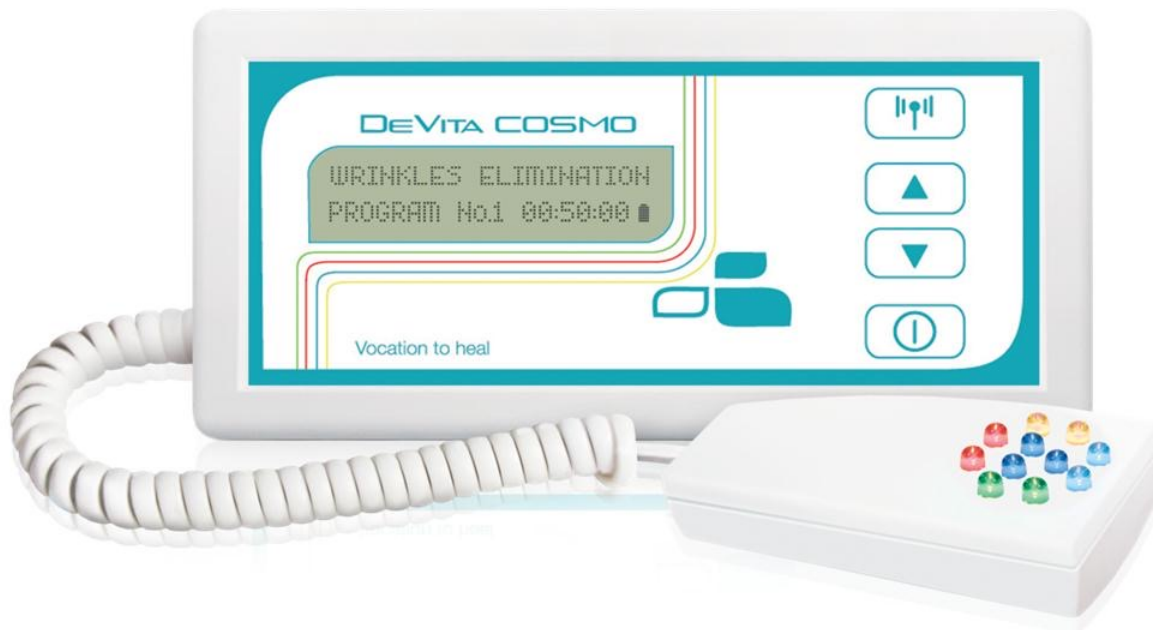
The skin is the mirror of most health problems of the organization.
A tired, dry and irritated skin indicates that something in the
body is not functioning properly.



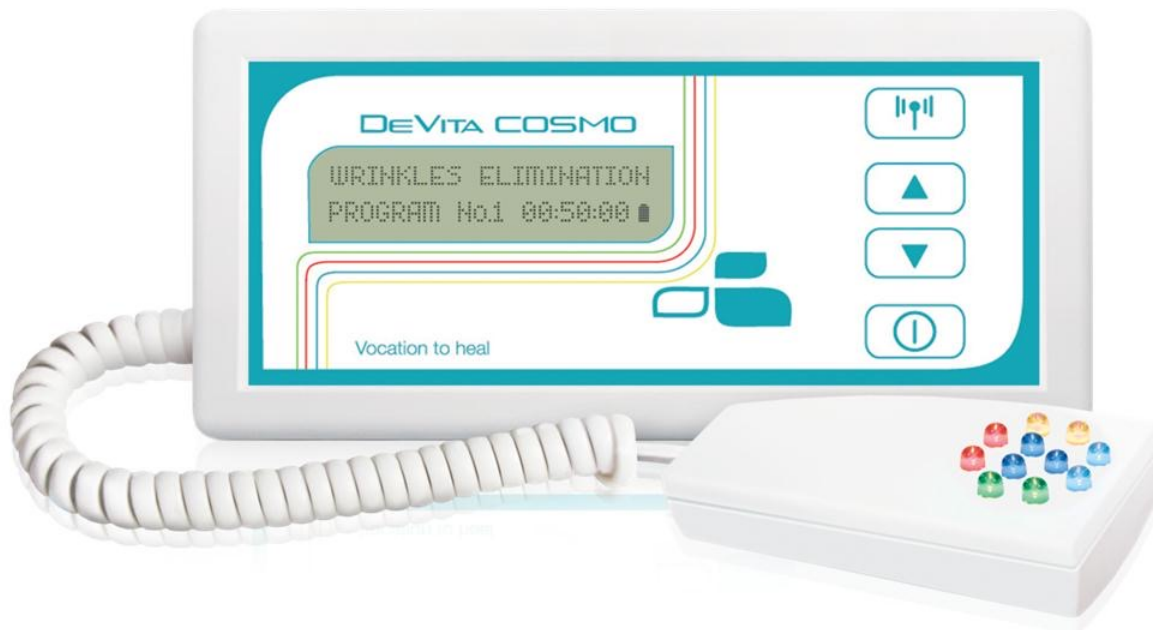


The DeVita Cosmo device, the first beauty device of Deta series, helps to remove fatigue, to address the frustration of a difficult day or just to improve our mood and appearance.

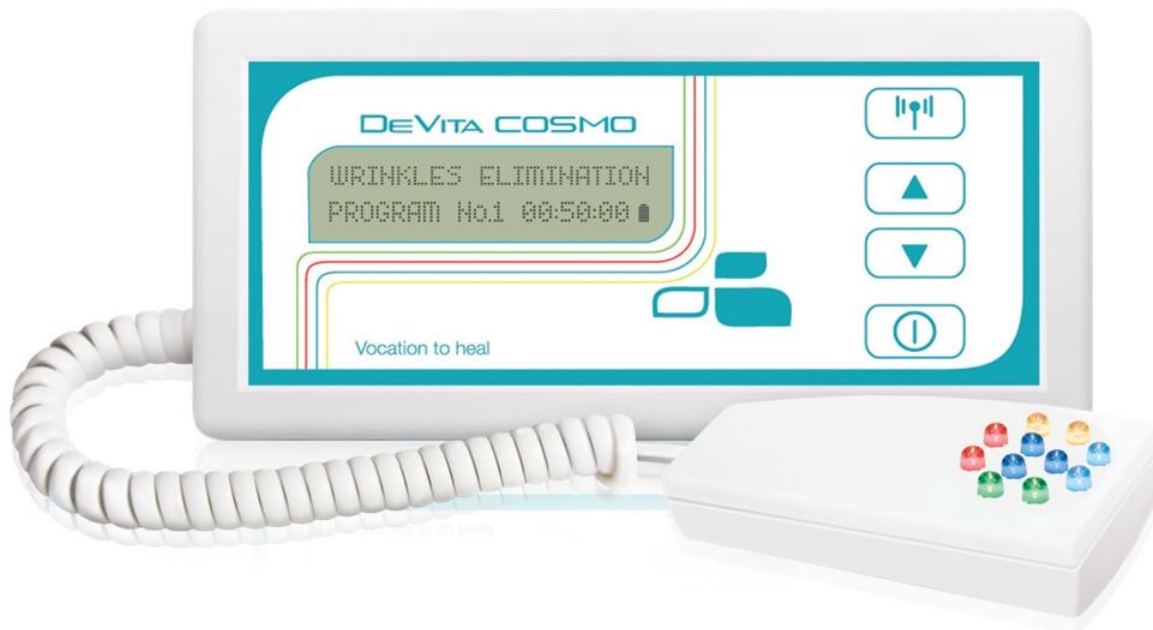
The uniqueness of the device is due to the quantum component, which operates in conjunction With the bioresonance DeVita Ritm 30 device



Firstly, the DeVita Cosmo 20 device addresses to the disorders or diseases of the organs



And also the quantum component eliminates skin imperfections caused by disorders or diseases of those organs



Restores
Collagen and Elastin



Sets and tones:
The thyroid, kidneys, liver,
pancreas and the spleen, the
cardiovascular System,
male and female endocrine
system, the nervous system, etc.



Consists of 20 programs caring for
the general situation of our organization.
It addresses to the "WHOLE" and not the individual.



The 20 Programs of DeVita Cosmo

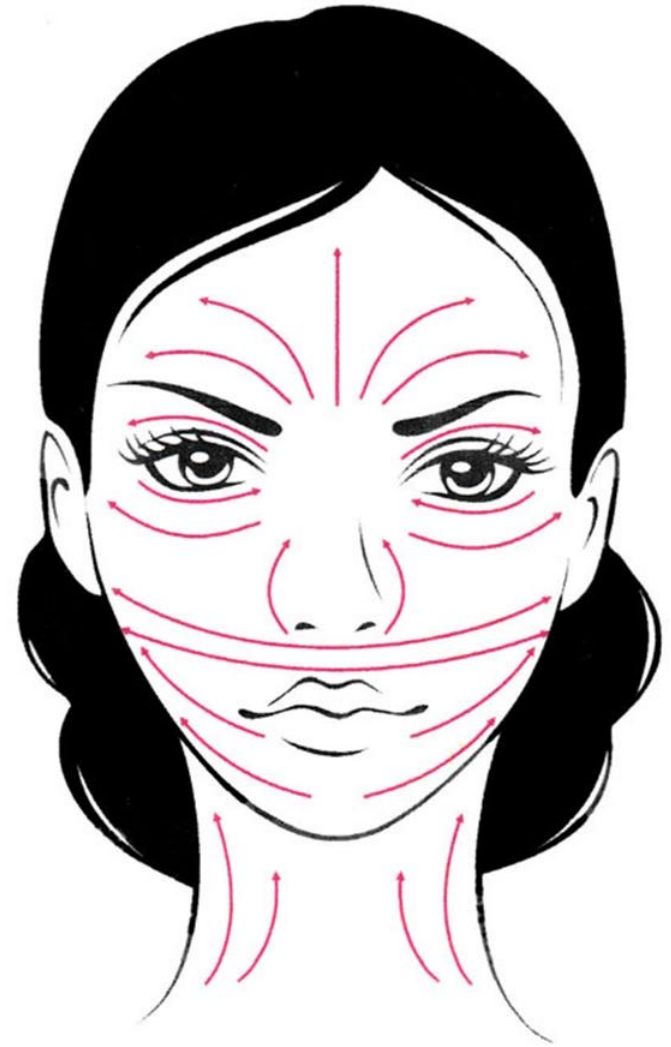
1. SKIN WRINKLES	6. LIVE QUIETLY	11. THYROID	16. CLEAR SKIN
2. FACIAL TONUS	7. STOMACH REGULATION	12. HEART AND BLOOD VESSELS	17. HAIR CARE
3. FEMALE HEALTH	8. DIGESTION	13. SPLEEN FUNCTIONING	18. HAND CARE
4. MALE HEALTH	9. LIKE CLOCKWORK	14. KEY OF LIFE	19. FACE WITHOUT DEFECTS
5. LIVER FUNCTIONING	10. KIDNEY FUNCTION	15. BRIGHT EYES	20. NICE FEET

1) Skin without wrinkles

Improves skin elasticity.

Restores the collagen and elastic columns and resets the normal function of the organs of the body.

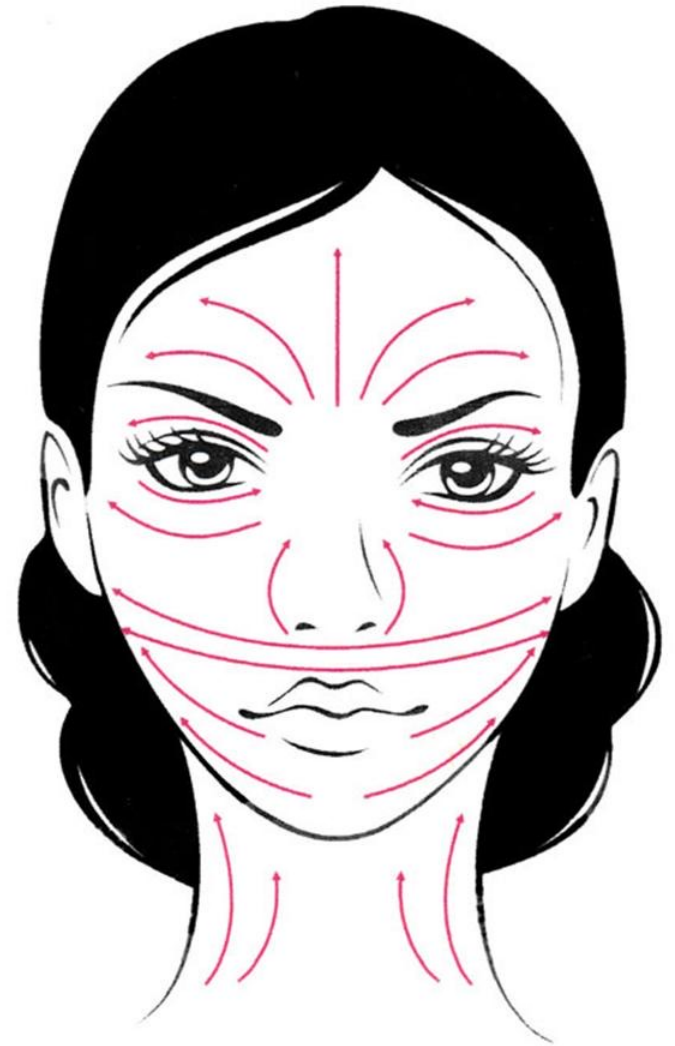
The program helps solving the problem of the weakening of the collagen tissue, which is a major cause of wrinkles.



Method of application

The placement of the device does not matter. The fixture with the light must follow the lines (as shown in the figure) in the direction indicated by the arrows. In such a case, we make a linear movement with the quantum component.

The eyes must remain closed during the process.

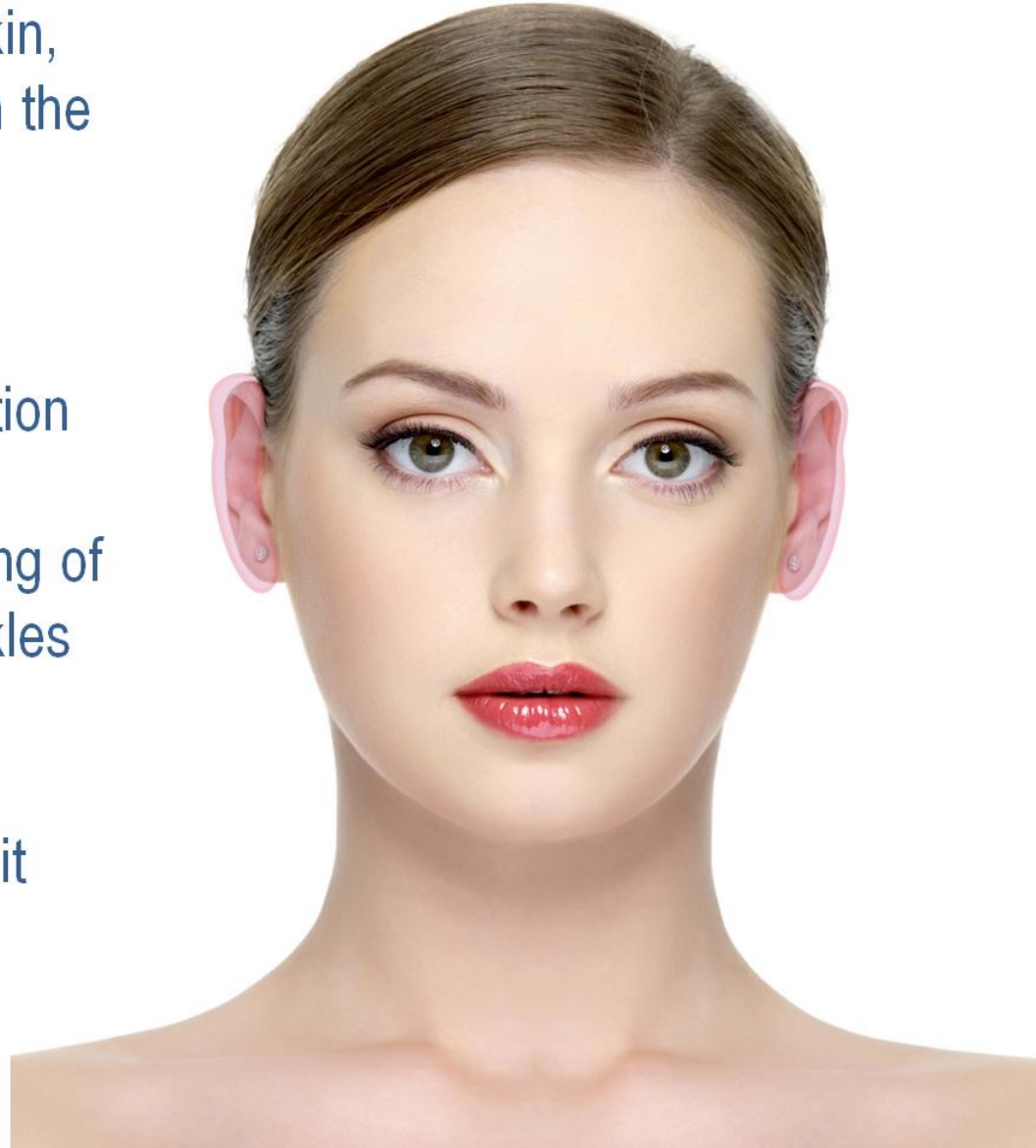


2) Toning

Eliminates fatigue and sagging skin, stimulates, refreshes, slows down the natural aging process, improves metabolism.

Regular use of the "Face Toning" restores the natural cell regeneration processes, in some cases strengthening them, prevents aging of the skin and eliminates fine wrinkles and smoothes deeper wrinkles.

The program gives you energy throughout the body and skin, as it contributes to the renewal of skin cells.

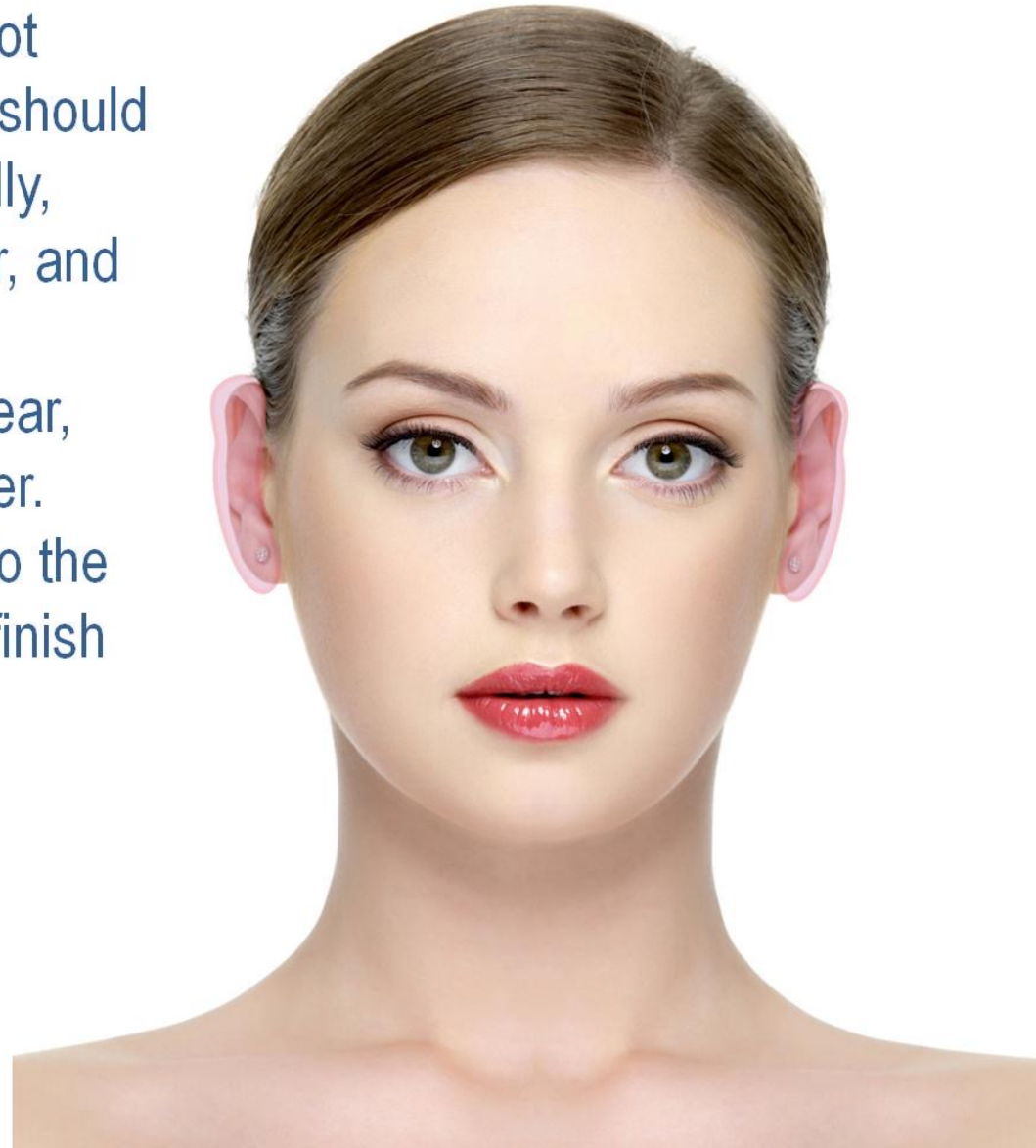


Method of application

The location of the device does not matter. The quantum component should be moved along the ear externally, starting from the middle of the ear, and gently moving downwards.

You should have 4 cycles in one ear, clockwise and then go to the other.

Again do four rounds and return to the first and go on like this until you finish the program. It is necessary to concentrate on the heat sense to guide your movements.



3) Good Women's Health

The "Women's health" is a program to regulate the female endocrine system and is useful for women of any age. The female ovaries produce hormones that affect the weight, the formation of the female

body, the normal functioning of the reproductive system. The program helps keeping the female body in excellent condition.



Method of application

The device is placed on the area of the solar plexus. The quantum component should be placed on indicated areas and start circular, clockwise motions from one to the other side in turn.

This process must be performed 1 time per week.



4) Good men's health

The man's hormonal system, mainly of middle-aged and elderly, affects nearly all body functions. The physical and mental health of the man, depends on the endocrine system.

The main action of the program lies on the regulation of the male Endocrine system: hypothalamus-pituitary-adrenal-gonads. It also

regulates the function of the testicles and prostate.

This program is essential for the prevention of sexual impotence.



Method of application

The device is placed on the area of the solar plexus. The quantum is placed on appropriate areas and we make the circular motions from one to the other side in turn.

This process must be performed 1 time per week.



5) Good liver function

Liver actually works as the laboratory for purification of the body. The modern lifestyle, environmental pollution, unnatural diet, drug use, etc keep the liver too busy.

To feel pleasant and seem healthy, you should support liver function



Method of application

The device is placed on the right subcostal area. With the quantum component we make clockwise circular motions on indicated areas in turn. The eyes should be closed and concentrate on the feeling of the heat.



6) Live in harmony (*Nervous System Setup*)

The human body is much safer than it looks. There are hidden forces and capabilities, which most do not know until the body receives a hard stress or suffers a severe psychological disturbance. But "emergency funds" of the human body have their limits. The prolonged stress exhausts the forces of the body. The purpose of the program "Live in harmony" is to help the nervous system, so as to neutralize the harmful effects of stress, normalize sleep, and take care of the body and be in a good mood.



Method of application

You must be in a quiet place, sit comfortably and start moving the quantum component on the indicated area with circular clockwise motion.

The eyes should be closed. The effect in this zone stimulates the entire nervous system, while offering a sense of calm and relaxation. This sense of joy and tranquility will certainly be reflected on your face.



7) Setting the stomach

The stomach is really a "hard worker" of our organism. The correct operation depends on the digestive system and the consequent "transfer" of nutrients throughout the body. The alcohol, smoking, continuous stress, the polluted environment, wrong diet etc. expose the stomach at the risk of various diseases, as the time goes by. The program regulates the stomach and helps win the battle for our health.



Method of application

Place the device of bioresonance in the viewing area of the stomach (above the organ). The placement of the quantum component should be on the areas indicated in the picture and start a circular, clockwise motion. The eyes must remain closed.



8) Good digestion

Most people do not consider about the functioning of the intestine. The sluggish bowel function is one of the main reasons for an unattractive and edematous skin. The "Digest" aims to maintain bowel in good working condition and prevent indigestion.



Method of application

Place the bioresonance device on the stomach. The quantum component must be placed on the indicated areas in the picture and then start a circular, clockwise motion.

You must make four circular motions on the first area and then go to the next, etc. Repeat the process until the completion of the program. The eyes must remain closed.



9) Like clockwork (*Gastrointestinal System Setup*)

The nature itself provides for the timely removal of toxins and other detrimental substances from the body.

Constipation is a problem associated with the rare bowel movements and difficult passage of stool. We treat constipation when the delay of emptying takes longer than 48 hours. Because of chronic constipation, skin becomes pale, yellowish or loses its elasticity and becomes flabby. The "like clockwork" program will help you check bowel function, and prevent unpleasant events.



Method of application

Place the bioresonance device on the stomach. The quantum component must be placed on the appropriate areas with clockwise, circular motions. You must make four circular motions on one area and then go to the next, etc. Repeat the process until the completion of the program. The eyes must remain closed.



10) Strengthening kidney function

The kidneys are the second in importance organs after liver, involved in the removal of ballast and toxic substances.

Regulate water and electrolyte metabolism, acid-alkaline balance, the concentration of sodium in the body, volume and osmotic pressure of blood and biological fluids, and excrete the excess water, urea, creatinine, uric acid and salts.

Disorders in kidney function are reflected directly on the face in the form of edema. Therefore, it is necessary to support the kidneys and regulate their operation.



Method of application

Place the device on the area of the kidneys in the back. The quantum component must be on the appropriate areas with Circular, clockwise motion. Four circular movements should be made in one area and then go to the next, etc.

Repeat the process until the completion of the program. The eyes must remain closed.



11) Regulate thyroid function

The thyroid gland is a very important organ of the endocrine system, which regulates metabolism, heat exchange, the function of the nervous system and other systems. The thyroid diseases are among the most famous in the world and placed flush with the diseases of the cardiovascular system. The "Thyroid" aims to prevent such diseases and the body function regulation in general and the elimination of symptoms of dry skin, brittle nails and hair.



Method of application

The placement of the apparatus of bioresonance is not important. The effect on the quantum component must be in the appropriate areas in a clockwise circular motion, moving smoothly from one area to another. Repeat the process until the completion of the program.



12) Setting of operation Cardiovascular system

The basic function of the cardiovascular system is the blood supply to organs and tissues. The blood moves continuously through the vessels performing all vital functions. With the help of the preventive program "Cardiovascular system" follows the chance to keep your cardiovascular system in proper condition.



Method of application

The apparatus of bioresonance be placed in the heart viewing area (above the heart).

The effect on the quantum component must be in appropriate area (figure) with clockwise circular motions. The eyes must remain closed.



13) Improving the functioning of the Spleen

Basic unit

Our Blood System and

Main Body

Our immune system.

The state of the spleen can affect the condition of the skin, the function of other organs and 'disposal'

the whole organism. Therefore, it is very important to perform regular preventive care measures.



Method of application

The device must be placed in the viewing area of the spleen (left side of the body). The effect on the quantum component must be in the range indicated by a clockwise circular motion. The eyes must remain closed.



14) The key of life (*Pancreas*)

Regulator level Insulin.

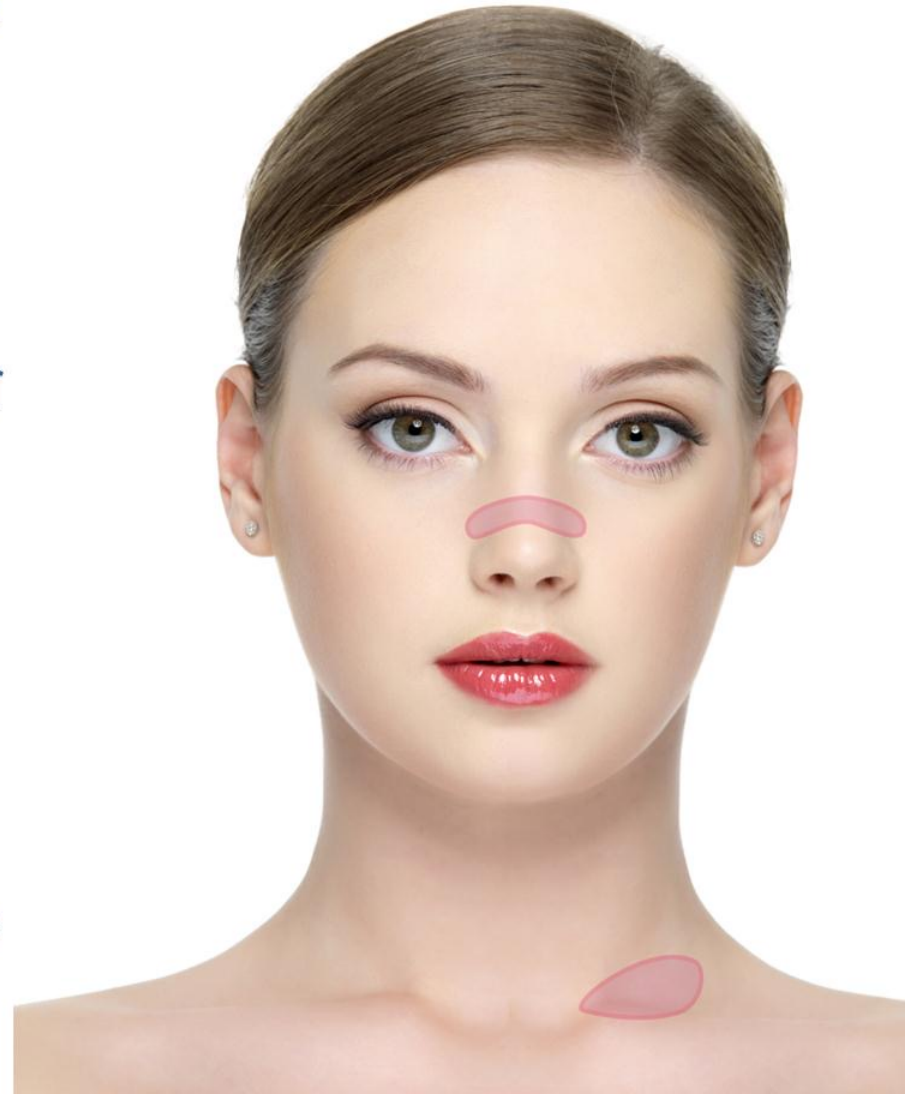
Responsible for
Paleness Skin

The pancreas is the key of life, experts say. The duration of human life depends on maintaining this gland. The more we dare wear gland faster aging our body. The pancreas is the organ that produces the responsible hormones for the absorption of sugar. The prevention of pancreatic diseases is one of the most relevant aspects.



Method of application

The device must be placed in the pancreas projection area. The pancreas is located below the stomach where you lying on his back. When you are standing, the pancreas will be located behind the stomach, more specifically between the stomach and spine, and to the left, at the XI- XII lower thoracic and I-II lumbar vertebrae. The effect on the quantum component must be in the appropriate areas in a circular motion. Perform four circular movements in one area and then move to the next, etc. Repeat the process until the completion of the program. The eyes must remain closed.



15) Good vision

They say the eyes are the mirror of the soul. The eyes provide the bulk of information about the surrounding world. Owing to intense pace and lifestyle of modern people, the eyes are constantly loaded, and as a result appear myopia and hyperopia. For successful prevention of eye diseases

should stabilize the operation of the eye muscles. The "Good vision" restores the normal functioning of muscles that control the lens.



Method of application

- Approach the window
- Find a small sign on the glass surface. If there is not, then create the glass a small sign (eg pen, nail polish, etc.),
- Place the quantum component side of the head in the vicinity of the temple. The component should not prevent catching. Make clockwise circular motion in appropriate areas and concentrate on feeling the heat,
- During operation of the device
Concentrate your gaze on the mark you made.



Method of application

For this purpose select the appropriate distance, so your eyes do not get tired,

- Concentrate your gaze on the mark for 8-10 seconds. Then move your eyes on a distant point for 8-10 seconds - repeat this exercise until fatigue eye. Then stop the process without removing the device from the eyes.

Allow the fixture to run until the end of the program.

- Gradually increase the time of exercise until the end of the operating time of the device program. Upon completion of training the eyes take a break to rest your eyes 20 to 30 minutes. This is necessary to adapt the mesh to the new conditions and to gain muscle elasticity.



16) Pure leather

The beautiful and smooth skin complexion and glowing skin without pimples without blackheads is the main goal of every girl. The "Clean skin" will help in removing skin imperfections that occur because of inflammation.



Method of application

The device must be placed at a distance of 25-30 cm. From the face. The quantum member positioned in appropriate locations (FIG) and made circular motions from one and the other side in the following order: first the front, after the cheeks, then the abdominal region. Repeat the process until the completion of the program. In order to prevent the program should be used every other day. If necessary, it can be used daily with circles: 3-4 days in a row at any time of day, after a break for 3-4 days and the process repeats. A total of 10 cycles. Following the implementation of this program to improve the result, use the recommended program "Digestion", as well as programs "Men's Health" or "Women's Health".



17) Fine hair

Spring season the human body faces stress, and hair after winter look more fragile. It is normal

hair loss during which fall to 100 hairs daily. But there is hair loss in which they fall more than 100 hairs per day, which leads to early diagnosis of disorders in body functions. It can be because of stress, low temperature, dry air indoors, deficiency of nutrients and as a result of the use of certain drugs. Your first assistant in order to prevent hair loss is the "Nice hair."

It is recommended to conduct prevention in autumn and spring in with seasonal period when increased hair loss is noted.



Method of application

Place in front of the face or the neck region. The quantum enhancement effect in appropriate areas (Figure). Next you need to make 4 clockwise circular motion in an area and go to the next, etc. Repeat the process until the completion of the program. Following the implementation of this program to improve the effect, recommended using the "digestion".



18) Manicure

The beautiful and manicured hands us our self-respect and dignity. With the quantum linear fitting then slowly from the fingertips to the base of the hand (radiocarpal joint). Special attention must be paid to diet, the bad habits and sleep quality. The health of the nails reflects the health of the entire organism. It is important to deal with the reorganization of the nails regularly to conduct the cosmetic procedures, even if the nails we have excellent appearance. Excellent effect simultaneously with these procedures brings the use of the 'manicure'.



Method of application

Place in a distance of 20 cm. From the edge of the hand. With the quantum accessory perform slow linear movements (figure) of the base end arm (radiocarpal joint) to the tip of each finger. First externally and then inwardly from the side of the palm. Repeat the process on the other hand. Remove the abdominal region. Repeat the process until the completion of the program.



Face without defects

The cells of the epidermis constantly renewed. Sometimes dead skin cells, which remain on the surface skin, prevent skin look beautiful and neat.

Regular preventive use of the program will help to prevent such phenomena.



Method of application

The bioresonance device must be placed at a distance of 25-30 cm. From the face. The component is placed in appropriate areas and carrying out circular motions from one and the other side in the following order: first the front, after the cheeks, then the abdominal region. Repeat the process until the completion of the program. In order to prevent the program should be used every other day. If necessary, it can be used daily with circles: 3-4 days in a row at any time of day, after a break for 3-4 days and the process repeats. A total of 10 cycles. Following the implementation of this program to improve the result, use the recommended program "Digestion", "Liver Health".



20) Tender heels

The beautiful legs not only due thanks to nature. The beautiful legs require constant attention and care. Healthy feet involve agility, youth and confidence. How often in the hot weather when wearing tight shoes, especially high heels, weight and feel tired legs? Staying with the "Tender heels" normalizes blood circulation in the legs and relieves fatigue and their swelling.



Method of application

The device must be placed at a distance of 20 cm. From the heel. With the quantum component do linear slow movements from the fingertips to the base of the heel (ankle).

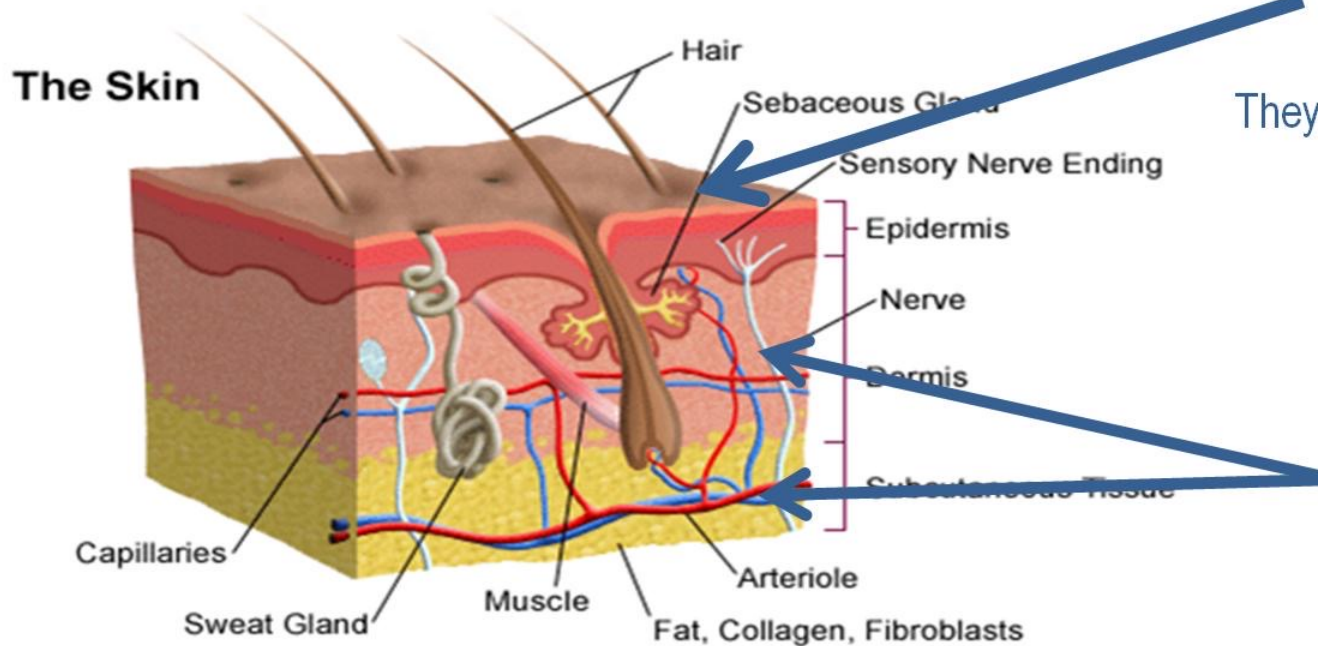
First externally and then inwardly from the side of the tread. Repeat the process on the other foot. Remove the abdominal region (arch). Repeat the process until the completion of the program.



THE PERFECT ANTI-WRINKLE & ANTIAGING COMBINATION



Del'or
physical solutions



They act on the skin surface

**DeVITA
COSMO**

It acts internally



Deta
Elis
Holding

Health
Business
Innovations

WWW.DEHOLDING.INFO